



2009 SUMMER STREET | STAMFORD, CT

Only One Space Remaining: 2,051SF - 3rd Floor



Choyce Peterson
Commercial Real Estate Specialists

Exclusive Leasing Agent

*“Convenient Stamford...
steps away from it all.”*

BUILDING FEATURES

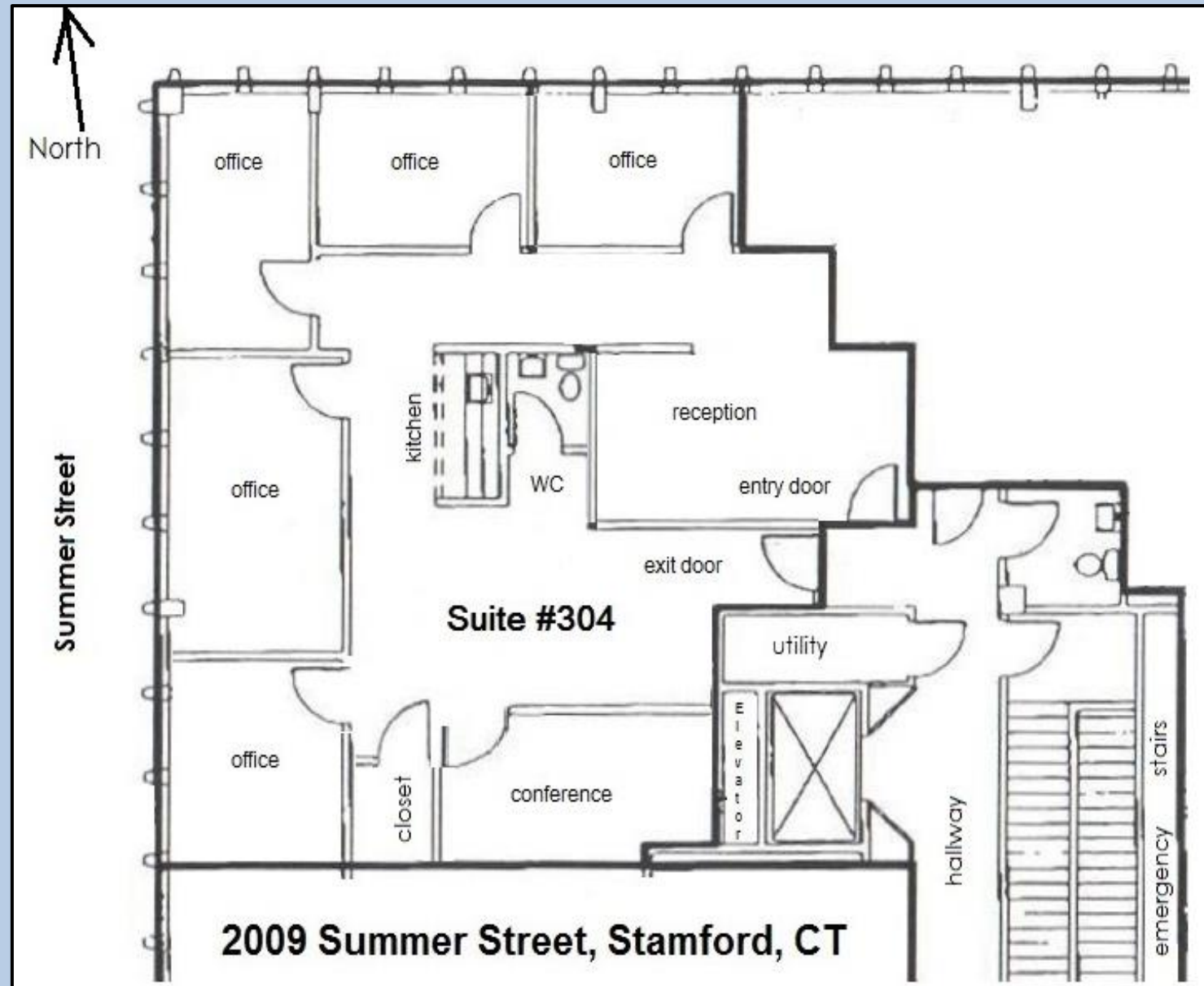


- Updated Entry (with digital directory), Lobby and Restrooms
- Building conference room
- Partially covered on-site parking (3/1,000sf)
- On-site family ownership

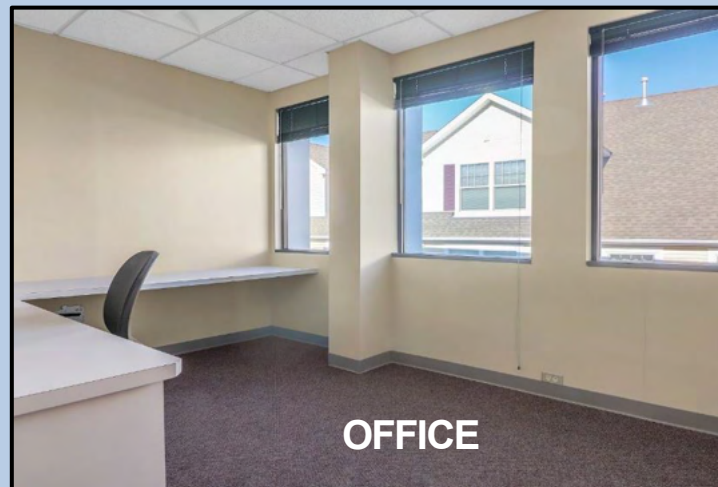
SPACE FEATURES – MOVE-IN READY

3rd FLOOR SUITE 304 | 2,051SF

- 5 EXTERIOR, WINDOWED PRIVATE OFFICES
- RECEPTION
- CONFERENCE ROOM
- PRIVATE RESTROOM
- KITCHENETTE

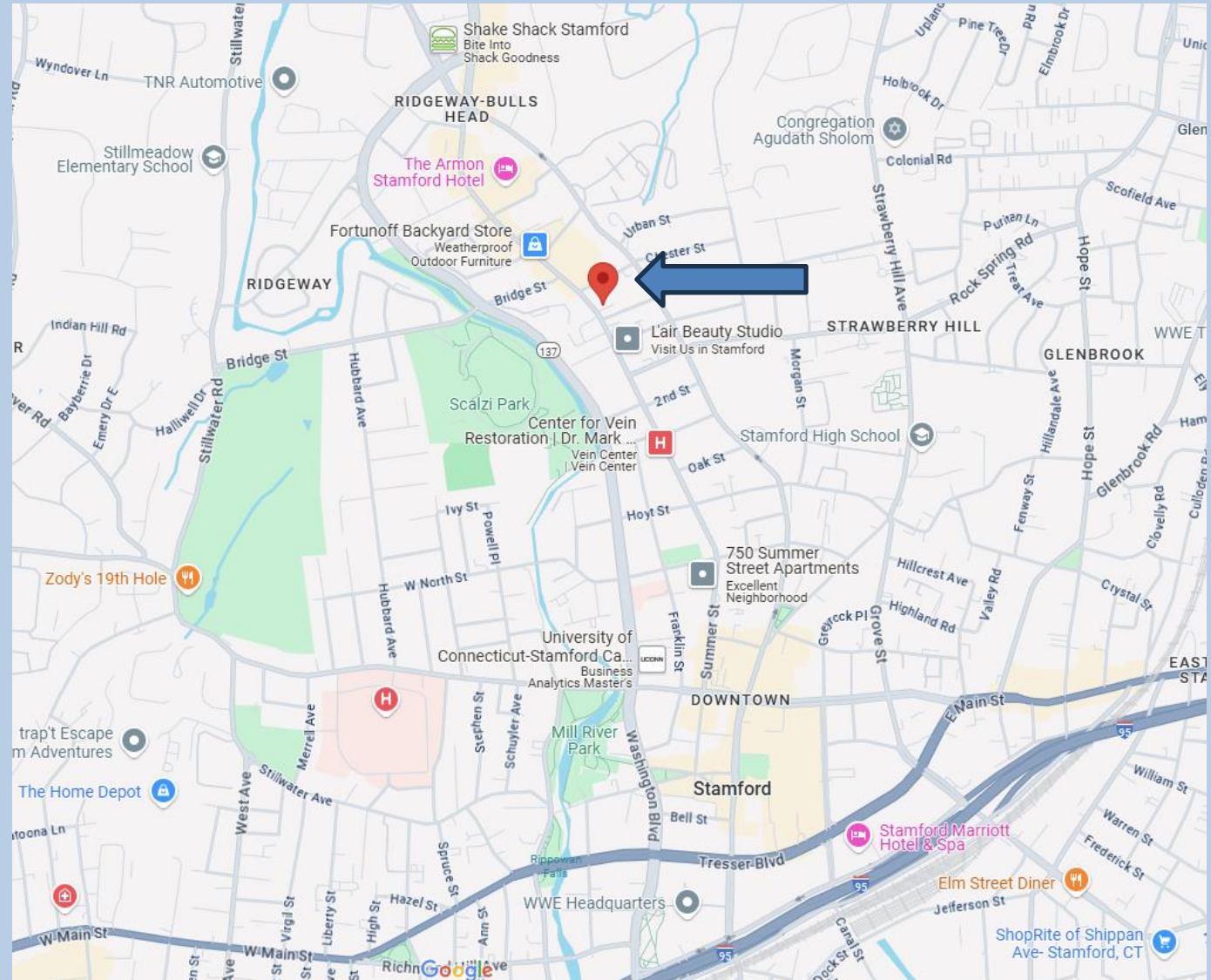


SPACE PHOTOS



LOCATION FEATURES

- **Walkable to Ridgeway Shopping Center and nearby retail with restaurants, shops, gym and banks**
- **Adjacent to Bus Stop and Traffic Light**
- **0.8 miles to UCONN Stamford campus**
- **0.7 Miles from Court House**
- **Easy access to both I-95 and Merritt Pkwy**
- **1.5 Miles to Stamford Train Station**



For more information contact:

CHARLENE S. O'CONNELL | Vice President | 203.961.8174 | coconnell@choycepeterson.com

Any information contained herein has been obtained from sources deemed reliable. However, Choyce Peterson, Inc., and/or their representatives, brokers or agents make no representation as to the accuracy of the information contained and offer the Property without express or implied warranties of any kind. Our principal(s) reserve the right to withdraw, modify, or condition the listing without prior notice.