



**85 Washington St | So. Norwalk, CT**

**Available Office Condo**

**FOR LEASE/SALE - WITH PARKING!**

 **Choyce Peterson** 3,000rsf – 1st floor

Commercial Real Estate Specialists

Exclusive Listing Agent



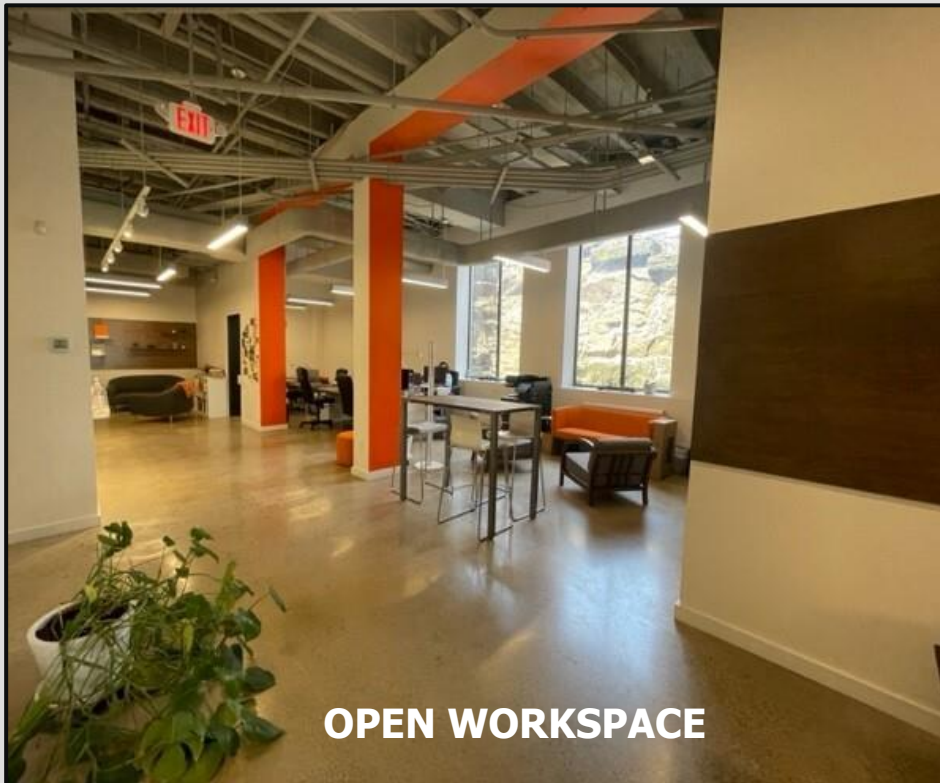
# 85 WASHINGTON STREET



**FURNISHED CONFERENCE ROOM**



**GLASS FRONT OFFICES**



**OPEN WORKSPACE**



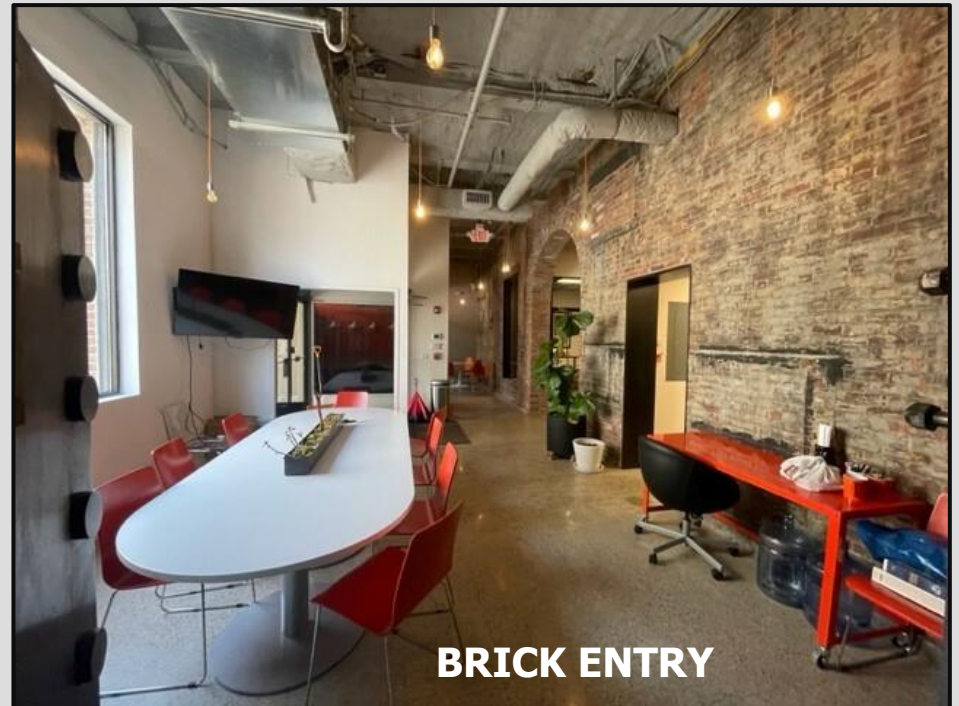
**UPDATED PANTRY**



# 85 WASHINGTON STREET



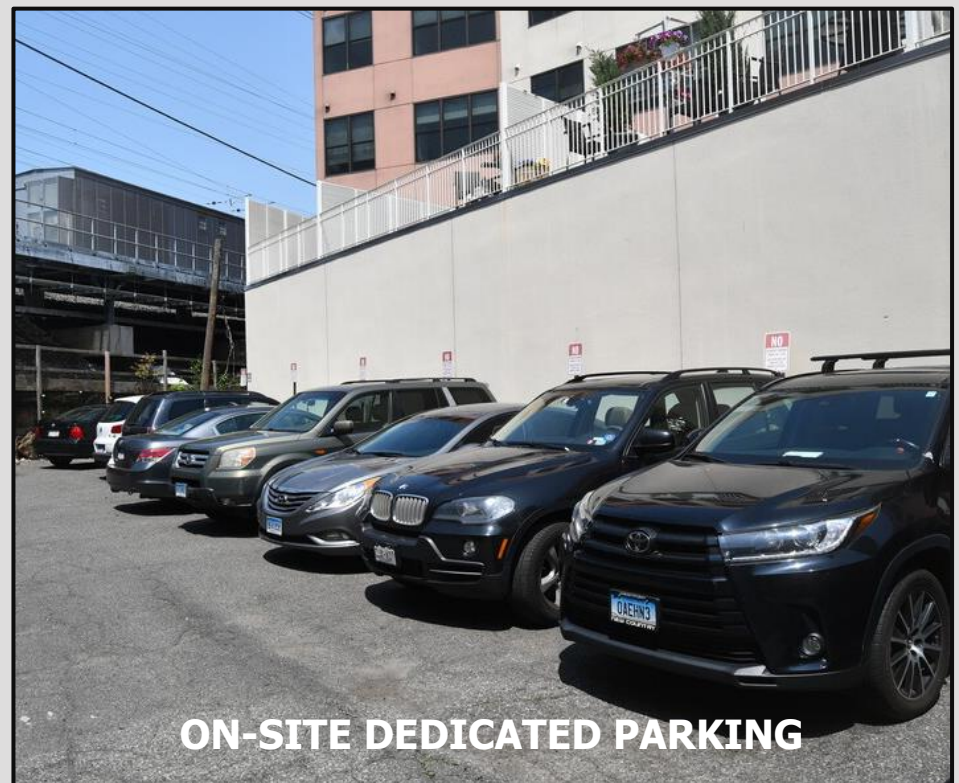
**DINING SPACE AND HUDDLE ROOM**



**BRICK ENTRY**

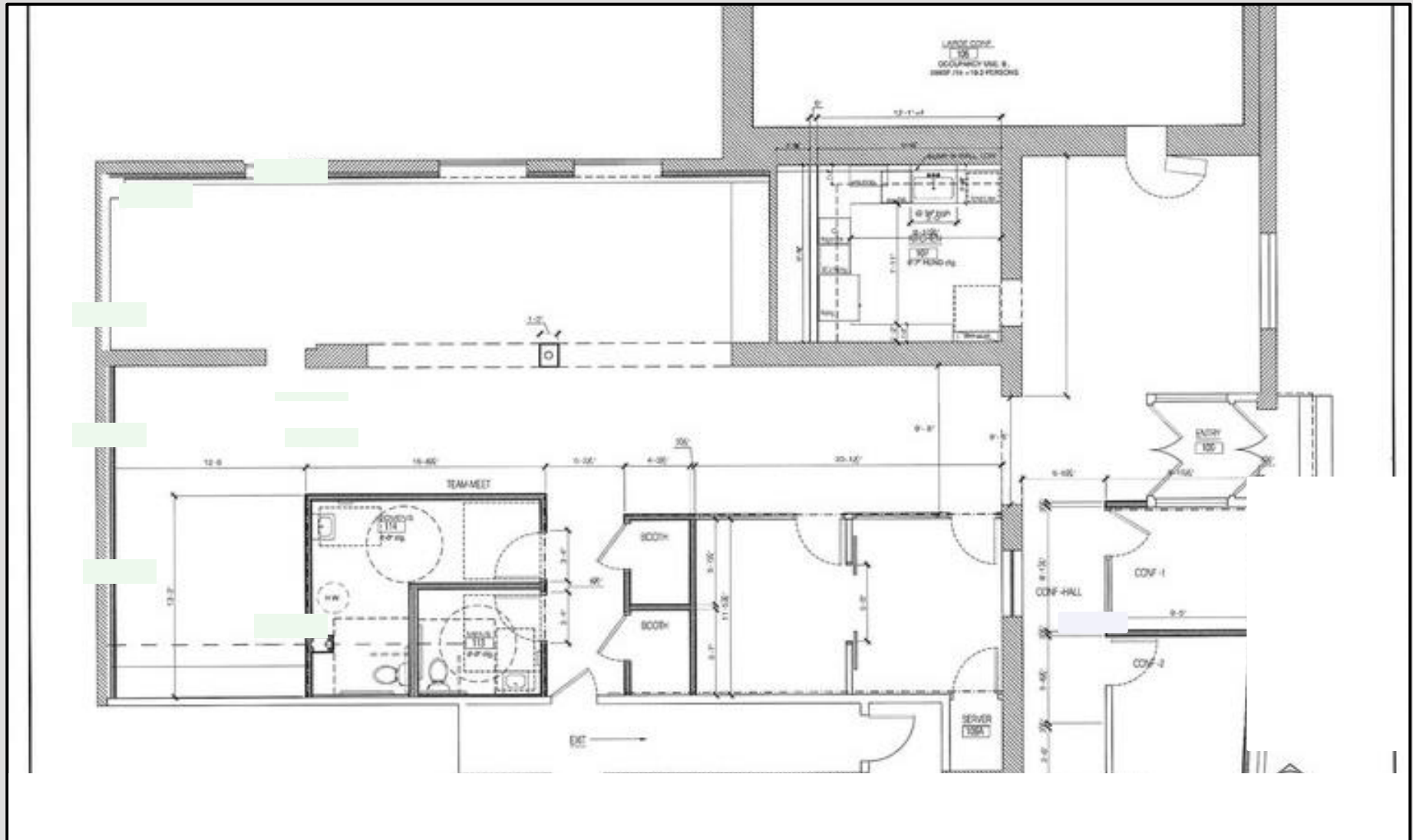


**DEDICATED ENTRANCE**



**ON-SITE DEDICATED PARKING**

# 85 WASHINGTON STREET



## SPACE/BUILDING FEATURES

- RENOVATED SUITE
- 2 GLASS ENCLOSED OFFICES
- 1 HUDDLE ROOM
- 2 PHONE BOOTHS
- POLISHED CONCRETE FLOORS
- 8 ON-SITE PARKING SPOTS
- LARGE FURNISHED CONFERENCE ROOM
- 2 PRIVATE RENOVATED BATHROOMS/ADA COMPLIANT
- UPDATED PANTRY

## LOCATION

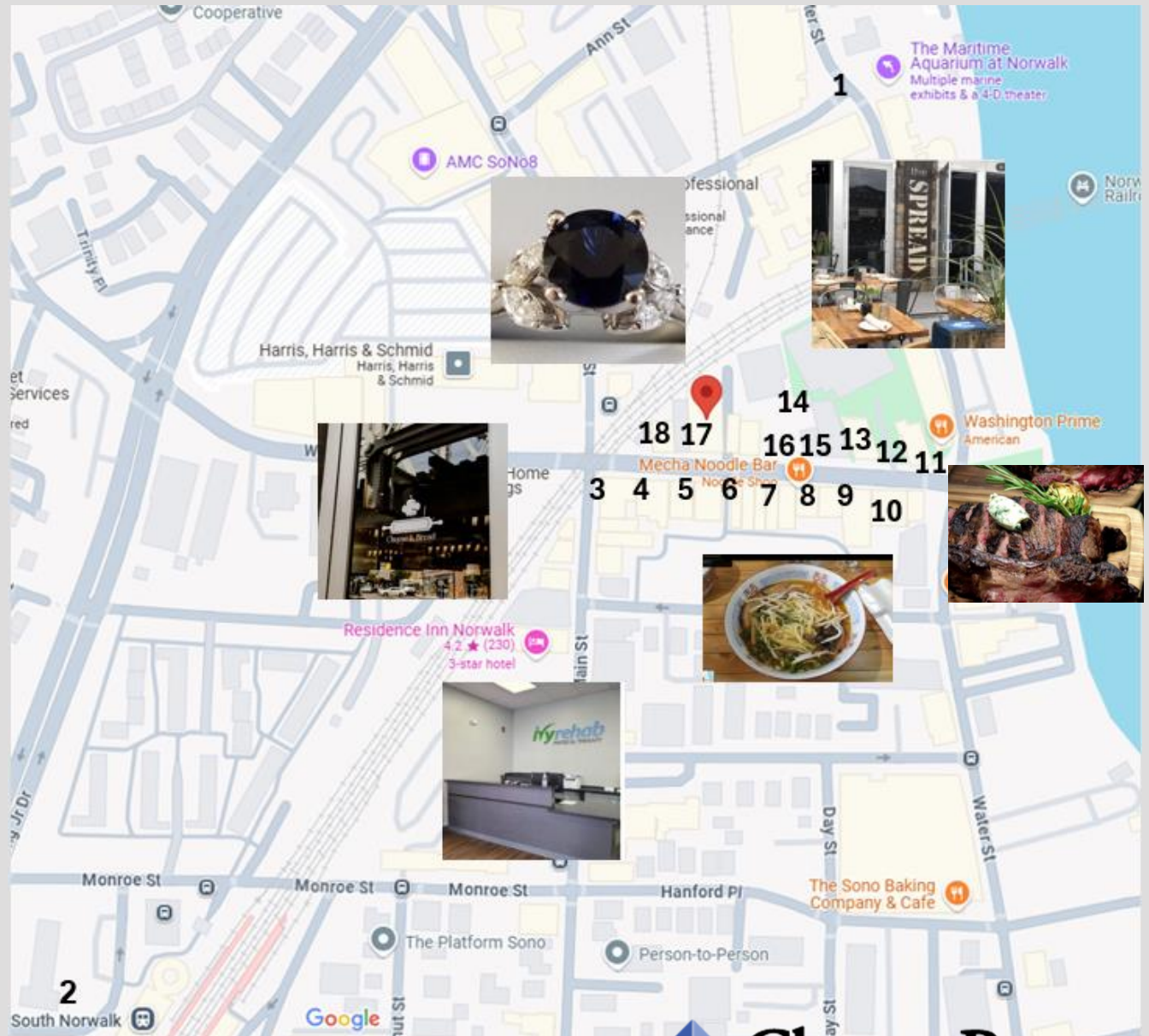
- IN THE HEART OF SO NORWALK/STEPS AWAYS FROM DINING/RETAIL
- 6 MIN WALK TO SONO TRAIN
- 0.5 MILES TO I-95



# 85 WASHINGTON STREET

## STEPS AWAY FROM IT ALL:

1. MARITIME AQUARIUM
2. SONO TRAIN STATION
3. CHEESE AND BREAD
4. TABLAO WINE BAR
5. IVY REHAB
6. MATCH
7. SIMPLE SONO
8. MECHA NOODLE
9. LAZY SISTER
10. DONOVAN'S
11. WASHINGTON PRIME
12. JEAN'S CLOSET
13. ECO EVOLUTION
14. THE SPREAD
15. POKEMOTO
16. SONO TATTOO
17. PELLEGRINI JEWELERS
18. SLEEK SALON



**For more information contact:**

**CHARLENE O'CONNELL | VICE PRESIDENT | 203.961.8174 | [coconnell@choycepeterson.com](mailto:coconnell@choycepeterson.com)**

**SCOTT PETERSON | VICE PRESIDENT | 203.810.4031 | [speterson@choycepeterson.com](mailto:speterson@choycepeterson.com)**

 **Choyce Peterson**  
Commercial Real Estate Specialists

This information contained herein has been obtained from sources deemed to be reliable. However, no warranty or representation, expressed or implied, is made or shall be deemed to be made, as to the accuracy of this information herein. Terms and availability are subject to change or withdrawal without notice.